



Load pin

manufactured to fit any size

incosa¹ SOLUTIONS

2025
PRODUCTSHEET

Load pin

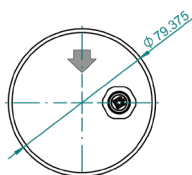
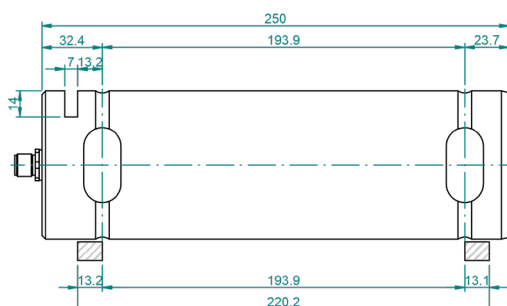
At Incosa Solutions, we develop high-quality load pins tailored to your specific application needs. Our load pins are designed to monitor force and prevent overloading in a wide range of industrial environments, ensuring safety and operational reliability.

Each pin is custom-manufactured with specific diameters and lengths to fit seamlessly into your system. To match the right solution to the right context.



Coding	Load pin
ESTIMATED ACCURACY	1%
HYSTERESIS ERROR	< 0,07%
CREPP, OVER 30 MIN.	0,01%
OPERATING TEMPERATURE	-20 to +40 °C / -4 to +140 °F
TEMPERATURE EFFECT ON SENSIBILITY	0,044 - % / 10°C
TEMPERATURE EFFECT ON ZERO	0,015 - % / 5°C
PROTECTION CLASS	IP 65 (IP 66 or 68 on request)
LOAD PIN MATERIAL	Stainless steel (Alloy steel on request)
CONNECTORS	M12 connector + cable with mating connector
OUTPUT OPTIONS	<ul style="list-style-type: none"> i-C4C - CAN bus mV/V (12V or 24V) 4-20mA (10V - 40V)
REQUESTABLE OPTIONS	<ul style="list-style-type: none"> Redundant (Double measurement/ Double output) Grease hole(s) Molded polyurethane cable

Standard load pin example



Load pin

Request document

QUANTITY

.....

LOAD PIN CAPACITY

.....

OUTPUT SIGNAL

i-C4C ☐ mV/V ☐ 4-20mA ☐

WITH CONNECTOR* ☐

Connector exit - Left ☐ Right ☐

*MATING CONNECTOR ☐

Straight ☐ Angled

Cable length 5m ☐ 10m ☐ Custom.....

WITH MOLDED CABLE ☐

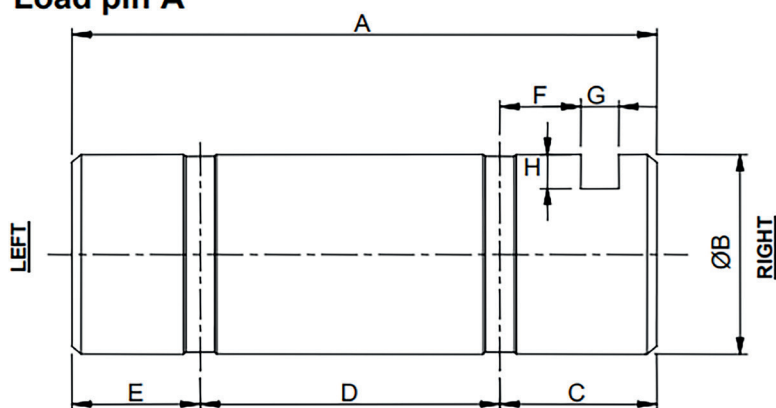
Cable exit - Left ☐ Right ☐

Cable length 5m ☐ 10m ☐ Custom.....

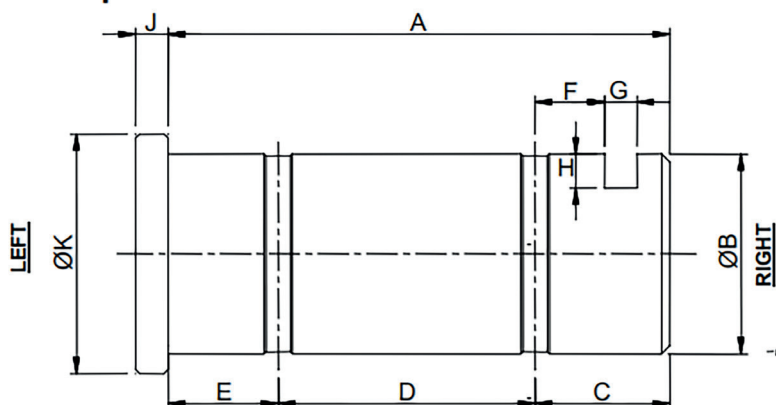
LOAD PIN TYPE

A ☐ B ☐

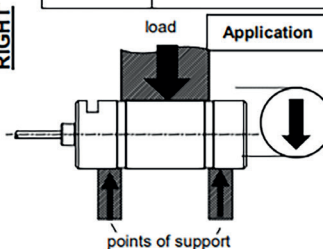
Load pin A



Load pin B



Indispensable bench mark for the fabrication	
	mm
Ø B	
D	
E	
F	
Ø K	
Additional bench mark	
A	
C	
G	
H	
J	



incosa¹ SOLUTIONS

www.incosasolutions.ca
sales@incosasolutions.com
69 Bigwin Road - Unit 5
Hamilton, Ontario L8W 3R3, Canada